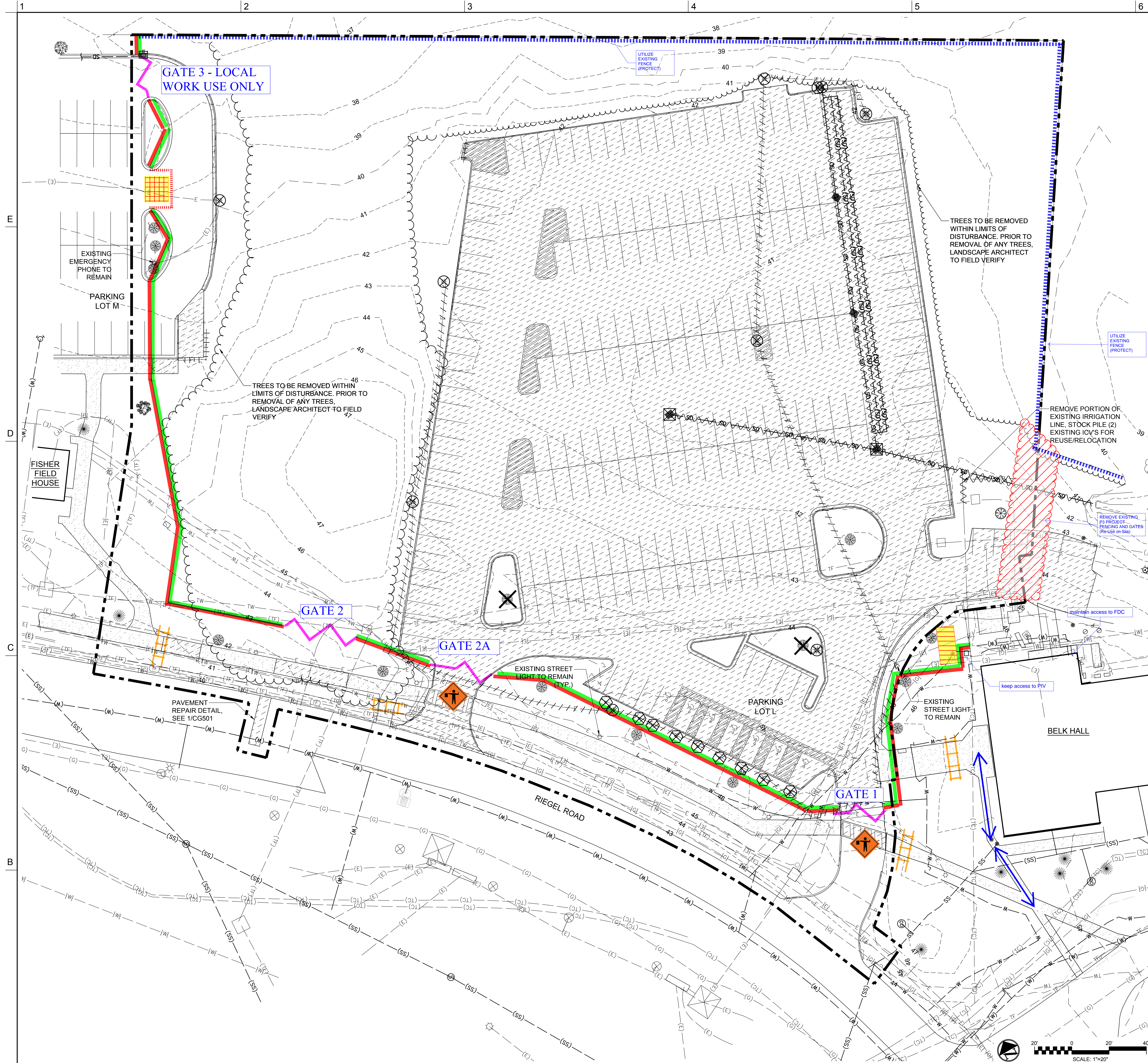


8/9/2018 4:18:18 PM
S:\4959001050\Drawings\CD100_49590016.dwg



DEMO LEGEND

- HARDSCAPE TO BE REMOVED
- DRY-UTILITY TO BE REMOVED
- WET-UTILITY TO BE REMOVED
- CONSTRUCTION FENCE
- FENCE OR WALL TO BE REMOVED
- DRY-UTILITY STRUCTURE TO BE REMOVED
- WET-UTILITY STRUCTURE TO BE REMOVED
- SIGN OR OTHER MISC TO BE REMOVED
- PROTECTED TREE TO BE REMOVED

UNCW STOCKPILING OF MATERIALS:
CONTRACTOR TO STOCKPILE SITE LIGHTING
POLES/FIXTURES, CALL BOXES AND SIGNS, AND RETURN
TO OWNER.

- SIDEWALK CLOSED BARRICADE & SIGN
- FLAGMAN
- MOBILE FENCE PANELS
- FENCE SCREENING
- FIXED FENCE POSTS
- GATES
- FIELD HOUSE TEMPORARY DUMPSTER LOCATION
- SUPT OFFICE

UNIVERSITY of NORTH CAROLINA WILMINGTON
601 SOUTH COLLEGE ROAD
WILMINGTON, NORTH CAROLINA 28403

PARKING DECK II - SOUTH CAMPUS
RIEGEL ROAD

SCO ID NUMBER: 19226
CODE: 441828
ITEM: 301

CONTRACTOR
Balfour Beatty Construction

DESIGNER

CLARK NEXSEN
1523 ELIZABETH AVENUE, SUITE 300
CHARLOTTE, NORTH CAROLINA 28204
704.377.8800

CLARK NEXSEN LICENSE NUMBER: C-1028

CONSULTANTS

WALKER CONSULTANTS

McKIM & CREED

CIVIL ENGINEER
243 NORTH FRONT STREET
WILMINGTON, NORTH CAROLINA 28401
910.343.1048

CORPORATE SEAL

PROFESSIONAL SEAL

SUBMITTAL
29 JANUARY 2019
SD/DD SUBMITTAL

REVISIONS

KEY PLAN

PHASE 1
Summer 2019
May 13, 2019 THRU
August 15, 2019

N

SHEET
DEMOLITION AND TREE REMOVAL PLAN

CD100

DESIGN: TRC
DRAWN: TRC
REVIEW: RMC

1

LEGEND/NOTES

SCALE: NTS